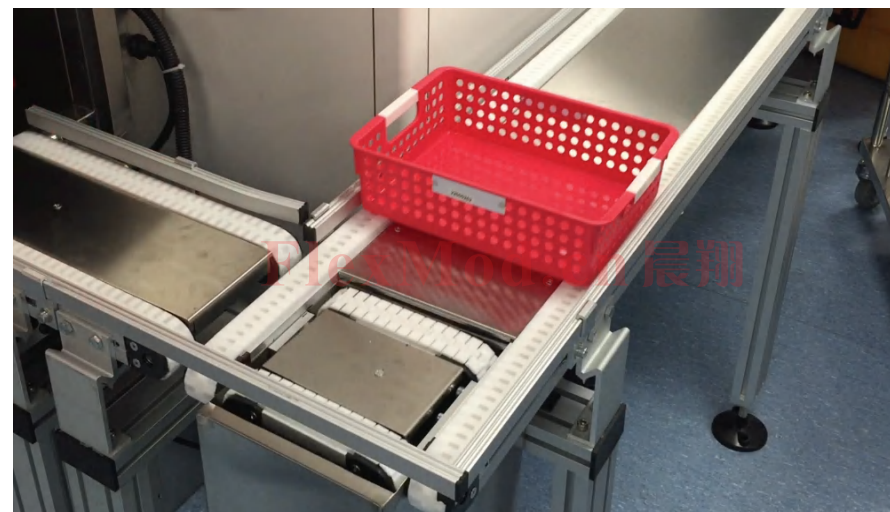


Application-6

Contents (目录)	2
Chains (链条)	4
Conveyor beam (输送梁)	7
End drive units (驱动单元)	8
Idler end units (从动单元)	9
Horizontal plain bends (水平弯头)	10
Examples of application (应用场合)	10



Chain width 35 mm (链宽35mm)



Technical characteristics (技术指标)

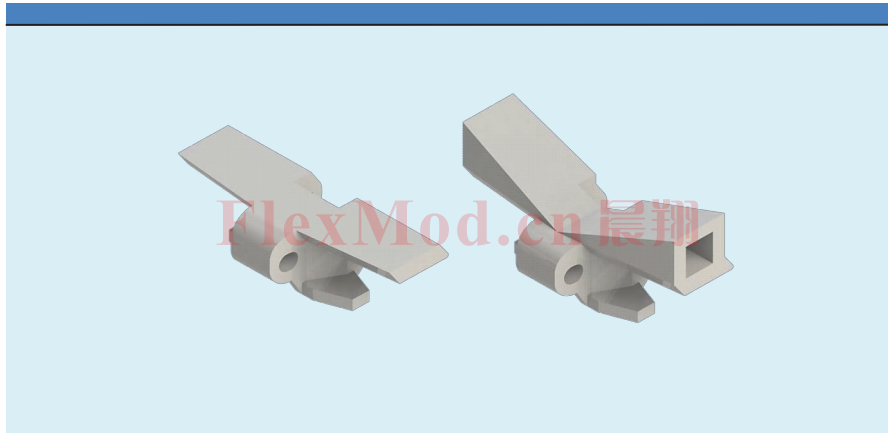
Chain tension limit (链条张力极限)500 N
Beam width (型材宽度)45 mm
Chain width (链条宽度)35 mm
Chain pitch (链条节距)12.7 mm
Maximum weight on conveyor (线体最大承载)30 kg
Maximum conveyor length (线体最大长度)6 m

Examples of application

All types of small products down to 10 mm diameter. Pharmaceutical bottles and perfume bottles. Puck handling of products like test tubes for blood and urine, small bottles, cosmetics.

应用场合

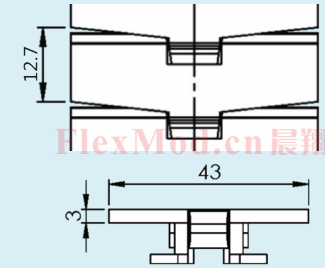
- 小至10mm的制品、小瓶子、化妆品
- 常用于顶升移栽的双轨输送线



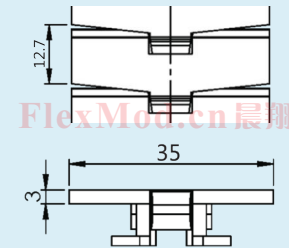
Plastic chain materials(链板材质)	Performance(特性)	Colour(颜色)
POM	Standard material/标准材料	white/白色
POML	Ultra low wear/超润滑	white/白色
POMA	Abrasion resistance/超耐磨	white/白色
POMC	Chemical resistance/抗腐蚀	yellow/黄色
POME	Conductive material/抗静电	black/黑色
POMK	High temperature resistance/耐高温	yellow/黄色
POMF	Food application/用于食品	white/白色
POMN	Low noise/低噪音	white/白色

CXUTP 3A45 Plain chain (平板链)
Length 3 mt
(长度3m)

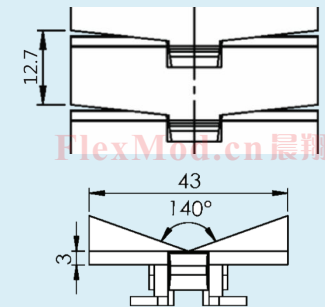
CX5113047 Plain link
(平板链节)



CXTCTP5 Plain chain (平板链)
Length 5 mt
(长度5m)

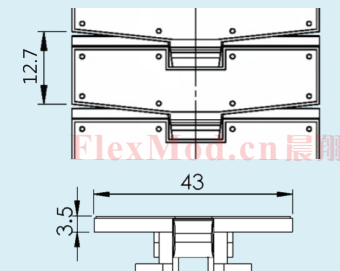


CXUTP 3A45V Cleated chain (楔链节)
Length 3 mt
(长度3m)



CXUTP 3A45F Friction top chain
Length 3 mt
(防滑顶链, 长度3m)

CX5113308 Friction top link
(防滑顶链节)



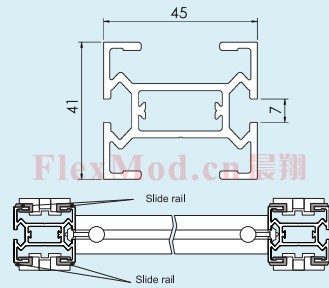
Conveyor beam (输送梁)

FlexMod®

Beam(输送梁)

CXUCB 3

Length 3 mt
(长度3m)



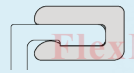
Slide rail (耐磨条)

Length 25 mt
(长度25m)

CXTCR 25H

Polyethylene
HDPE+PA6 Gray

CXTCR 25H



CXLAH 3X6A



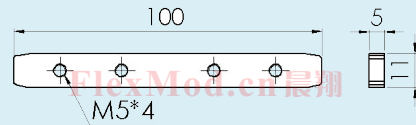
CXLAH 3X6A

Aluminium rivet
(铝铆钉)

Connecting strip with set screws
(梁体连接条)

CXUCJ 5X100

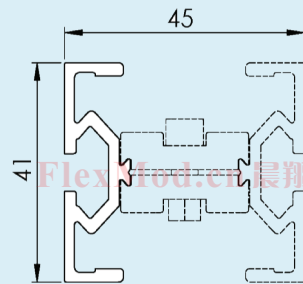
Length 100



Half beam (半梁)

CXUCB 3H

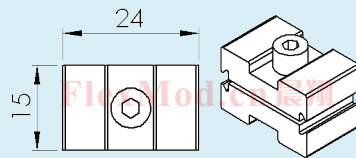
Length 3 m



Beam clip (梁夹)

CXUCE 25X14

Including M6 screw and locking nut.



CX45-4

Conveyor beam (输送梁)

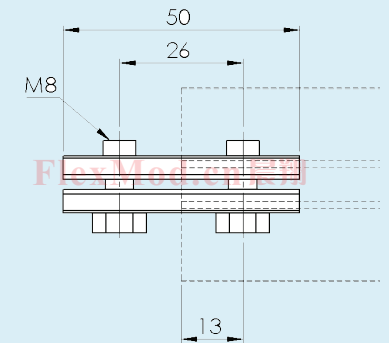
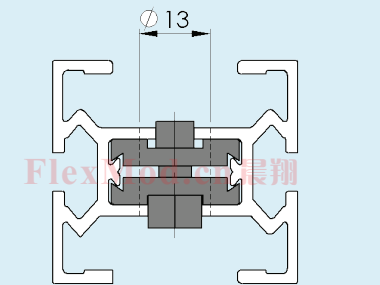
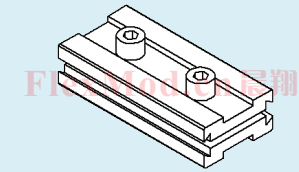
FlexMod®

Connecting strip kit (连接条)

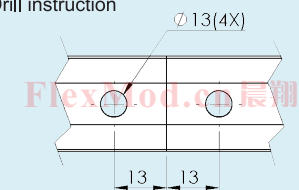
CXUCJ 50

Connecting strip kit
Aluminium

Including M8 screws.



Drill instruction



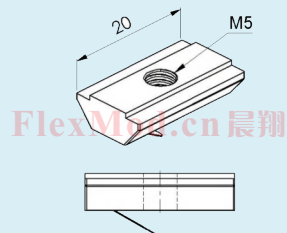
www.flexmod.cn

CX45-5

Conveyor beam (输送梁)

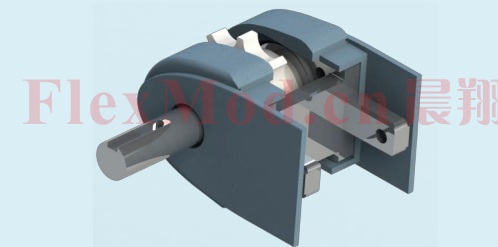
FlexMod®

CXFAN 5* Steel, zinc-chromated
CX5056131 Multipack (500 pcs)



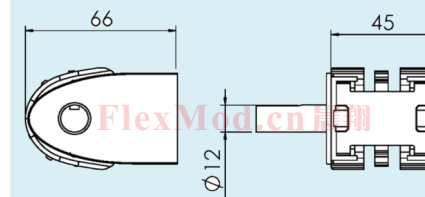
End drive unit (驱动单元)

FlexMod®



CX45

CXUEB 0 LU/RU Drive unit (驱动单元)
Transmission on left-hand side
(传动装置在左侧)



CXUEB DD P Mid drive unit, with pallet guiding, configured item*
Fixed speed*, Pallet width 240, 320,
400, 480, 640 mm

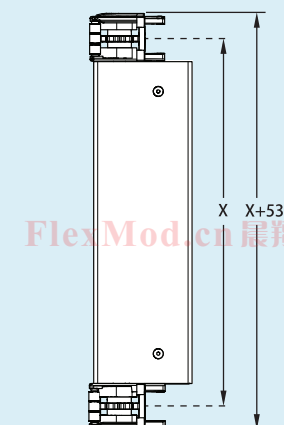
CXUEB 0 MGPD210 Mid drive unit, with pallet guiding, without motor
Pallet width 240 mm

CXUEB 0 MGPD290 Mid drive unit, with pallet guiding, without motor
Pallet width 320 mm

CXUEB 0 MGPD370 Mid drive unit, with pallet guiding, without motor
Pallet width 400 mm

CXUEB 0 MGPD450 Mid drive unit, with pallet guiding, without motor
Pallet width 480 mm

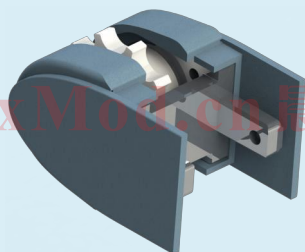
CXUEB 0 MGPD610 Mid drive unit, with pallet guiding, without motor
Pallet width 640 mm



Idler end unit (从动单元)

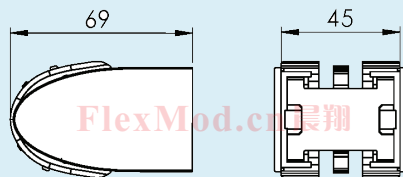
FlexMod®

FlexMod.cn 晨翔



CXUEJ 50

Idler end unit
(从动单元)



FlexMod.cn 晨翔

CX45-8

Horizontal plain bends (水平弯头)

FlexMod®

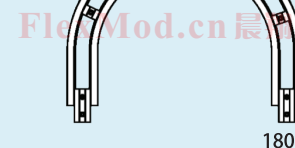
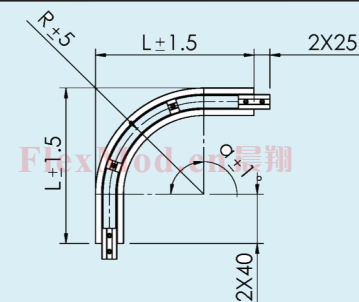
Item (型号)	Angle(a) (角度)	Radius(R) (半径)	Length(L) (长度)
CXUBP 30R150	30°	150±5	86
CXUBP 45R150	45°	150±5	111
CXUBP 90R150	90°	150±5	212.5
CXUBP 180R150	180°	150±5	212.5

CXUBP 180R150
Horizontal plain bend, 180°
(水平弯头180°)

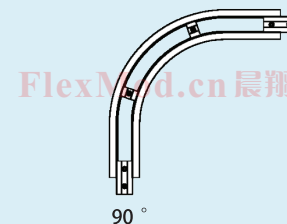
CXUBP 90R150
Horizontal plain bend, 90°
(水平弯头90°)

CXUBP 45R150
Horizontal plain bend, 45°
(水平弯头45°)

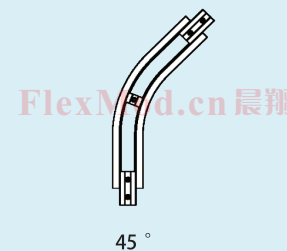
CXUBP 30R150
Horizontal plain bend, 30°
(水平弯头30°)



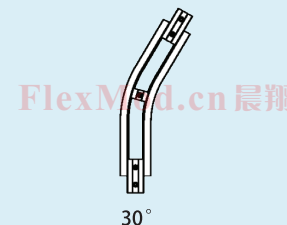
180°



90°



45°



30°

CX45

www.flexmod.cn

CX45-9