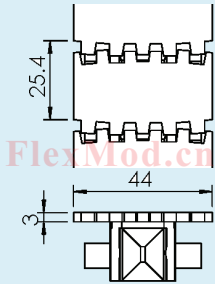


Plastic chain materials(链板材质)	Performance(特性)	Colour(颜色)
POM	Standard material/标准材料	white/白色
POML	Ultra low wear/超润滑	white/白色
POMA	Abrasion resistance/超耐磨	white/白色
POMC	Chemical resistance/抗腐蚀	yellow/黄色
POME	Conductive material/抗静电	black/黑色
POMK	High temperature resistance/耐高温	yellow/黄色
POMF	Food application/用于食品	white/白色
POMN	Low noise/低噪音	white/白色

*Plain chain* (平板链)

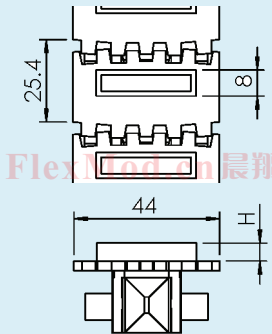
CXSTP 5 Plain chain (平板链)  
Length 5 mt (长度5m)

CXSTL 44 Plain link (平板链节)

*Cleated chain* (楔链)

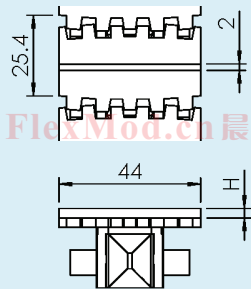
Type D cleats  
Length 3 mt (长度3m)  
CXSTF 5X3 D... H=3 mm  
CXSTF 5X5.5 D... H=5.5 mm  
CXSTF 5X9 D... H=9 mm  
CXSTF 5X20 D... H=20 mm  
CXSTF 5X27 D... H=27 mm

Cleated link (楔链节)  
CXSTL 44X3 D H=3 mm  
CXSTL 44X5.5 D H=5.5 mm  
CXSTL 44X9 D H=9 mm  
CXSTL 44X20 D H=20 mm  
CXSTL 44X27 D H=27 mm

*Cleated chain* (楔链)

Type G cleats  
Length 3 mt (长度3m)  
CXSTF 5X3 G... H=3 mm  
CXSTF 5X5 G... H=5 mm  
CXSTF 5X9 G... H=9 mm

Cleated link (楔链节)  
CXSTL 44X3 G H=3 mm  
CXSTL 44X5 G H=5 mm  
CXSTL 44X9 G H=9 mm

*Tools and accessories* (工具和附件)

CXLTT 9X16 Plastic pivot (塑料珠)

CXLTD 4X36 Steel pin (钢销)

CXLMJ 4 Pin insertion tool (销子安装工具)

